

Surya Pharmaceutical Limited

Samba Unit SIDCO, IGC-II, Samba, J&K

Location and Connectivity



Description	Distance (in kms)
Nearest National Highway	NH 1 (~ 5 kms)
Nearest railway station	Samba Railway Station (5.2 Km)
Nearest Major City	Jammu (39.3 km)
Nearest Civil Airport	Jammu Airport (36.7Km)

Unit Established in 2011

Lease Period: 90 Years
Commencing From 2006
Leased Land Area – 80 Kanal

Plant & Machinery –Product & Power Utilities

Installed Capacity: 84.5 KL

Product	Utilities at the time of Operation
▪API (Beta Lectum Sterile)	•Connection Load -5391Kw
• Formulations	•ETP
	•Purified Water Generation Plant
	•DGs
	•Fuel Storage
	•Air Handling Units
	•Cooling Tower Water system
	•Chilled Water System
	•Brine System
	•Hot Water System
	•Boilers
	•Air Compressors etc

Samba Unit

Plant & Machinery –Select Equipment Details

At the time of installation/operations

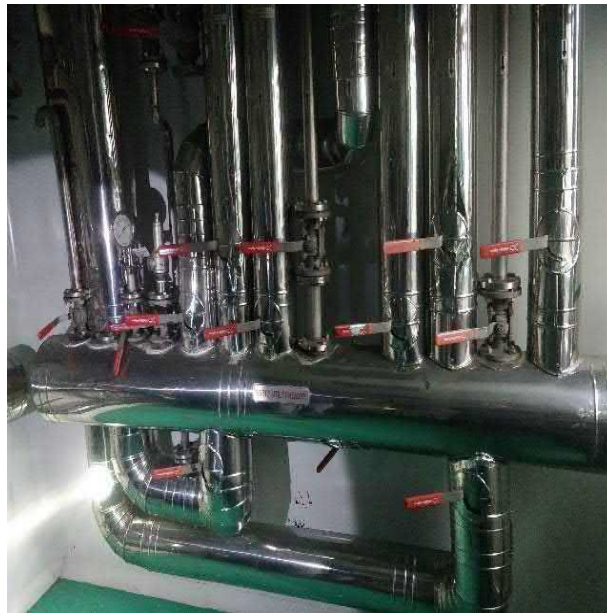
Plant	Equipment	MOC	Capacity
Plant 1	SS Reactor	SS316L	1200L
	SS Reactor	SS316L	1200L
	SS Reactor	SS316L	1200L
Plant 2	SS Reactor	SS316L	1200L
	SS Reactor	SS316L	1200L
	SS Reactor	SS316L	1200L
Plant 3	Reactor	SS316	2000L X 2
	Reactor	SS316	3000L X 2
	Reactor	SS316	6000L
	Reactor	SS316	500L
	Reactor	MS/GL	1000L, 500L, 6300L, 3000L
	Reactor	SS316	1000L
Plant 5	Reactor	SS316	1.5KL, 3.5KL, 3.5KL, 4.0KL, 3.0KL, 2.0KL, 2.5KL, 1.0KL, 5.0KL, 3.0KL
	Reactor	Glass	4.0KL, 4.0KL, 3.0KL, 3.0KL, 3.0KL
	Top Discharge Bag Lifting Centrifuge	SS316	60", 60", 48", 48", 60", 60"

Product Details:

Plant	Product Category	Products	Capacity (MT/ Annum)
Plant 1	API (Sterile)	Meropenam Trihydrate Sterile	25.7
		Sterile Meropenam buffered with sodium carbonate	30.5
		or	
		Cilastatin sodium	13.5
		Sterile Imepenam buffered with cilastatin	6.3
		or	
		Sterile Imepenam	6.3
Plant 2	API (Sterile)	Meropenam Trihydrate Sterile	25.7
		or	
		Imepenam buffered with cilastatin	13.5
		or	
		Sterile Imepenam	6.3
Plant 3	API (Non-Sterile)	BCK - I	37.5
		Imipenam - IV (Side Chain)	10.9
		Cilastatin Stage - I (CLS-I)	6.6
		Cilastatin acid (CLS-II)	5.3

Plant	Product Category	Products	Capacity (MT/ Annum)
Plant 4	Injections	Dry powder injections	25.9 million vials/annum
Plant 5	API (Non-Sterile)	Imepenam crude	6.7
		Imepenam III	21.7
		BCK-II	26.6
		BKC-III	18.1

Photos:







Thank You

Presented By:

Naresh Kalra Corporate Lawyer

Website : www.nareshkalra.com & www.proudlegal.in

Regd No: P/345-1/2009

Address: SCO-437 4th Floor, Medallion 68,
Sector 68, Mohali Chandigarh Punjab 160062

e-Mail: advocatenareskhalra1@gmail.com

Mobile No. 9868240037 , 9815580037